



Wide Format Multifunction Printer
LP-1040



Wide Format Multifunction Printer
LP-1040

OKI
Open up your dreams

Specification		LP-1040-MF
Printer	Printing Technology	Electrophotographic Technology (LED exposure / single component type dry development / OPC drum)
	Print Resolution	600 dpi
	Continuous Print Speed	7.0 A1 (841 x 594 mm)-size prints per minute
	Print Supply Method	Roll Paper x 2
	Paper Types	Plain, Tracing (75 gsm), Film (121.5 gsm)
	Paper Size	ARCH E (48 x 36"), ARCH D (36 x 24"), ARCH C (24 x 18"), ARCH B (18 x 12"), ARCH A (12 x 9"), ANSI E (44 x 34"), ANSI D (34 x 22"), ANSI C (22 x 17"), ANSI B (17 x 11"), ANSI A (11 x 8.5"), 30 x 42", 15 x 21", MAP B1 (1000 x 700 mm), MAP B2 (700 x 500 mm), DIN B1 (1000 x 707 mm), DIN B2 (707 x 500 mm), DIN B3 (500 x 353 mm), A0 (1189 x 841 mm), A1 (841 x 594 mm), A2 (594 x 420 mm), A3 (420 x 297 mm)
	Print Length *1	10 m (32')
	Guaranteed Print Area	Full area excluding 5 mm (0.2") top, bottom, left, and right margins
	Supported Data Formats	HP-GL, HP-GL/2, HP RTL, TIFF, CALS
	Interface	Ethernet 10BASE-T/100Base-TX/1000Base-T
Network Protocol	TCP/IP (IPv4/IPv6), LPD, RAW, FTP	
Logical Port	10 ports	
Scanner	Scan Resolution	600 dpi
	Scan Width	Maximum 914 mm (36")
	Scan Length *2	Maximum 10 m (32')
	Scan Speed *3	Black & White/Color: Maximum 240 mm (9.4") per second
	Supported Data Formats	Black & White: PDF, TIFF Color: PDF, TIFF, JPEG
Interface	Ethernet 10BASE-T/100Base-TX/1000Base-T	
Others	Memory	2 GB
	HDD	500 GB
	Web Function	Available
	Dimensions *4	1200 x 605 x 1145 mm (47" x 24" x 45")
	Weight *5	205 kg (451 lb.) or less
	Power	230 VAC, 50/60 Hz, 7 A
	Power Consumption	1450 W or less
Warm-Up Time	240 seconds or less	

*1 Print length depends on types of media or operating environment. *2 Maximum scanning length may be limited by paper size, resolution or data format. *3 Scanning speed varies by resolution.
*4 Stacker, tray and paper outlet guide are excluded. *5 Toner and paper are excluded.



High speed printing 7 A1-size prints/min

High speed scanning (monochrome/color) Up to 240 mm/sec

Touch panel 8.5" color LCD



OKI

Sydney
Level 1
67 Epping Road
Macquarie Park NSW 2113

WWW.OKI.COM.AU
1800 800 140

Melbourne
Suite 826, Level 8
1 Queens Road
Melbourne VIC 3004

Brisbane
42 Manilla St
East Brisbane QLD 4169

Auckland
8 Antares Place
Rosedale
Auckland 0632

WWW.OKI.CO.NZ
0800 654 669

Increased productivity and ease of use

Teriostar

Wide Format Multifunction Printer

LP-1040



Operation

Compact design for superior ease of use

● Reduced downtime in case of print quality trouble

The photoconductor drum, which is the part mainly involved in case of print defects, is a cartridge that can be replaced by the user.



● Compact printer fully operable from the front

The printer is compact even with 2 paper rolls installed inside. All printer operations, such as paper roll and toner replacement or panel operations, are performed from the front.



● Large and clear color touch panel

Messages are displayed on a color touch panel of 8.5 inches. Relaxing colors as well easy-to-use and well-thought-out button layout have been employed to increase efficiency of operations such as copy settings and scanning. The display offers also an enhanced visibility of troubleshooting instruction messages for better ease of use.



● USB interface

A USB port is provided at the back of the printer to allow users to export scanned data directly to a USB drive.

*1 The pictures are only for the purpose of explaining the function.

Print

Printing solutions matching your application and speed requirements

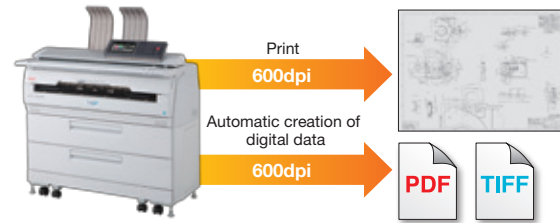
● High printing speed of 7 A1-size pages per minute

The printer helps you in increasing your productivity by achieving high printing speed of 7 pages per minutes in A1 format (landscape) and 7.5 D-size prints per minute.

● Increased productivity through multitasking

The printer offers multitasking capabilities that make it possible to use the copy or scan function while printing. Users can now start their next task without having to wait for the job being processed to finish.

● Automatic creation of high-resolution digital data of the printed drawings



● Can be used together with a page printer

Files, such as PDF, TIFF and HP-GL, can be printed on a Teriostar printer and an OKI page printer with TerioStation2 software.

Utilization example

Direct printing of multiple files of different print sizes



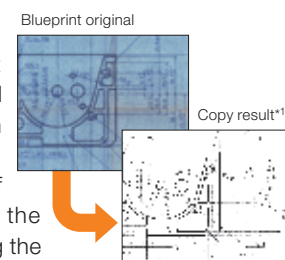
● Supports print length of up to 10 m

Copy

A large choice of easy-to-use digital copy function

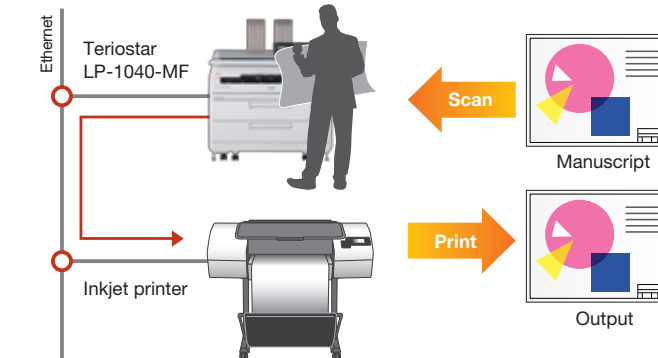
● High quality digital copy

The printer features a mode that automatically scans the background density of the original document. In this mode, the printer detects precisely the background density of the original document and selects the optimal copy density, thus eliminating the need for the user to repeat the scan process to adjust the density manually*1.



● Color copy function

The data of the scanned images can be directly printed on color printers connected to the network*2. This function is very useful to easily create a wide-format color copy system.



● Main copy functions

- ▶ Up to 999 copies
- ▶ Horizontal and vertical custom scaling
- ▶ Erase frame
- ▶ Fixed scaling
- ▶ White on black reverse
- ▶ Blank space
- ▶ Wide zoom: 25 to 400, increment of 0.1
- ▶ Partial copy
- ▶ Sort: up to 99 original documents
- ▶ Mirror reverse

Scan

High speed color scanning of up to 240 mm/sec

● A color scanner is equipped as standard

The printer is equipped with a color scanner that achieves a high speed of up to 240 mm/sec to help you increase both quality and productivity of your copying and scanning tasks. The scanner can handle original documents of up to 914 mm in width and 10 m in length.

● Scan data saving methods matching your application

Dispatching

Data is directly saved to shared folders on the network. No utility software or server is required.

Storing

Scan data is stored in the HDD equipped as standard in the printer. Data can then be acquired from the printer, using a Web browser or using a dedicated application.

- Data acquisition using a Web browser
- Data acquisition using the dedicated application TerioStation 2
- Data acquisition using the submission function of the printer

Security

A wide range of security functions to protect customer information

● Print box function

Drawing data is spooled temporarily and can be printed in batch or canceled from the printer operation panel.

*2 Contact your sales representative for more information on printers that can be connected.

TerioStation 2

The TerioStation 2 integrated software application is supplied as standard to provide an optimal input and output tool to make the most of Teriostar functions.

View function

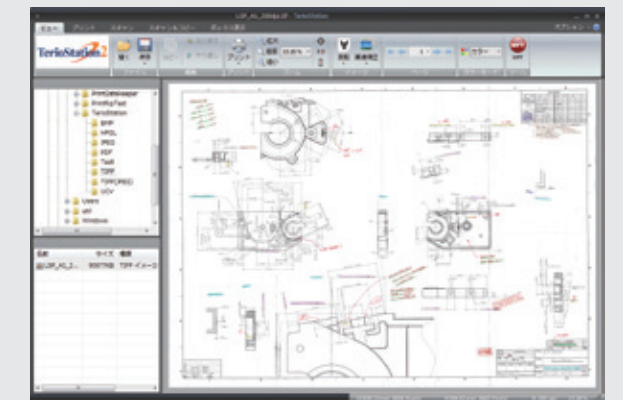
HP-GL, TIFF, PDF, JPEG, BMP and PNG files are displayed very quickly. This function also makes it possible to separate or join TIFF and PDF files, and to change the format of displayed files.

Scan function

The LP-1040-MF model can be used as a scanner on the network using the scan driver.

Print function

HP-GL, TIFF, PDF, JPEG, BMP and PNG can be printed together in batch without having to launch multiple applications to handle each format. The print function also makes it possible to change the print order and supports collate printing.



● Various user authentication functions

The printer supports user authentication using PIN codes or user names and passwords, or using smart cards. Operation rights regarding printing, copying and scanning can be configured for each user.

● Data encryption and deletion

Output data can be encrypted from the Windows driver or the TerioStation 2 application. In addition, a function to delete immediately data stored in the printer HDD is also available to protect customers' confidential information.